



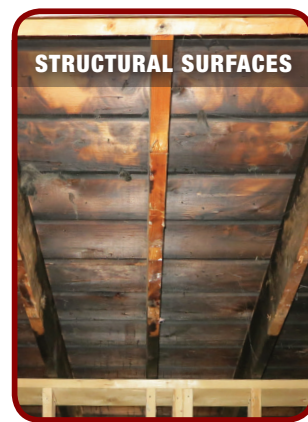
Professional Products
Professional Results




Try **ULTRA RECON** For Superior Priming And Sealing of Finished And Decorative Surfaces

Superior Stain Blocking, Recoat-Ability and Topcoating

RECON SMOKE ODOR SEALER



Structural Restoration Sealer Encapsulant

Permanently Encapsulates Smoke Odors On Structural Surfaces



BONDS TO ANY SUBSTRATE



STAIN BLOCKER



MOISTURE PERMIABLE FINISH

3090 White

126 FL OZ
3.73 L

For Professional Use Only

For Technical Information call 800.342.3755

These suggestions and data are based on information we believe to be reliable. They are offered in good faith, but without guarantee, as conditions and methods of use of this product are beyond our control. Neither ICP Construction, Inc., nor its agents shall be responsible for the use of this product or any procedures or apparatus mentioned. We recommend that the prospective user determine the suitability of this product, for each specific project and for the health and safety of personnel working in the area.

For additional information check Safety Data Sheet (SDS) or Product Data Sheet (PDS) available online at www.fiberlock.com.

Fiberlock, the Logo and other marks on this label are trademarks of ICP Construction, Inc.

RECON Smoke Odor Sealer is a revolutionary solvent free smoke odor sealant and stain blocker designed to encapsulate malodors on multiple surfaces and block the toughest stains. RECON Smoke Odor Sealer with OdorLock technology is water based, permeable and is not flammable. Unlike typical water based coatings that "wick" smoke odors and stains out of the substrate as they dry, RECON Smoke Odor Sealer with OdorLock technology prevents smoke odors and stains from migrating through the coating while maintaining its breathability. This technology provides one coat odor control on most surfaces and continues to block odors even with seasonal changes in temperature and humidity. RECON Smoke Odor Sealer (SOS™) is your final step to encapsulate residual odors typically found on fire damage restoration projects.

SURFACE PREPARATION

Warning! If you scrape, sand, or remove old paint from any surface, you may release lead dust. LEAD IS TOXIC. EXPOSURE TO LEAD DUST CAN CAUSE SERIOUS ILLNESS, SUCH AS BRAIN DAMAGE, ESPECIALLY IN CHILDREN. PREGNANT WOMEN SHOULD ALSO AVOID EXPOSURE. Wear a NIOSH approved respirator to control lead exposure. Carefully clean up with a wet mop or HEPA vacuum. Before you start, find out how to protect yourself and your family by contacting the U.S. EPA/Lead Information Hotline at 1-800-424-LEAD (5323) or log on to www.epa.gov/lead.

Prior to applying Fiberlock's RECON Smoke Odor Sealer (SOS™) it is critical that the substrate be thoroughly cleaned. Smoke odor encapsulation is a final step that needs to be part of a comprehensive smoke/odor management protocol. This protocol should include the following steps: Odor Cleaning, Odor Neutralization and Odor Encapsulation.

Fiberlock recommends cleaning with RECON Heavy Duty Cleaner or Extreme Duty Cleaner, followed by the application of RECON Extreme Duty Odor Counteractant. After the substrate is clean, dry and sound apply RECON Smoke Odor Sealer to encapsulate any residual odors that remain.

APPLICATION TOOLS

Apply RECON Smoke Odor Sealer with a roller or airless spray equipment.

- Brush: Synthetic, nylon or polyester bristle
- Roller: Not recommended
- Spray Settings: Pressure: 2000-3000 P.S.I. Tips: .017 to .021 tips

PRODUCT APPLICATION

Apply RECON Smoke Odor Sealer generously and uniformly by brush or airless spray. Roller application is not recommended. Apply one coat of RECON Smoke Odor Sealer and ensure that the finished surface is properly sealed. To ensure that the finished surface is properly sealed, two-coats may be required on some porous or heavily stained surfaces. Topcoat floor applications when foot traffic or heavy storage is expected. RECON Smoke Odor Sealer is tintable up to 2 oz. of universal liquid colorant per gallon.

3090-1 White

HVAC Application: RECON Smoke Odor Sealer can be used to encapsulate malodors within HVAC systems as part of fire damage restoration. This product can be used in both fiberglass lined and unlined ductwork. RECON Smoke and Odor Sealer meets requirements of NFPA 90A/90B standard.

TOPCOATING

Wait at least 24 hours prior to topcoating @ 70 - 77°F, 50% R.H. Lightly sand and clean surface of Recon Smoke Odor Sealer prior to topcoating. Do not topcoat Recon Smoke Odor Sealer with anything less than a quality 100% acrylic latex coating with an eggshell sheen or higher. Avoid enamel, alkyd and oil based paint topcoats. Test patch prior to application is recommended. Failure to follow these guidelines could result in cracking or "alligatoring" on certain substrates.

COVERAGE

- Smooth Surfaces: 200-300 ft²/gal.
- Porous Surfaces: 100-200 ft²/gal.

DRYING TIME @ 70°F 50% R.H

- To Touch: 30 Min.
- Recoat: 4 Hours
- Topcoat: 24 Hours

CLEANUP

Clean tools and drippings with warm soapy water before RECON Smoke Odor Sealer dries. The coating and any contaminated diking material should be thoroughly air dried and collected into drums. The drums should be sealed and labeled and land-filled or incinerated according to local, regional and national regulations.

PRECAUTIONS

Store in a dry place at temperatures between 40°F (4.5°C) and 90°F. (32°C). Keep closures tight and containers upright to prevent leakage. Product is non-combustible. Stir thoroughly. Do not mix with any other coatings, solvents or colors in oil. Do not apply when air or surface temperature is below 55°F, or when drying conditions are poor or when surfaces are above a 15% moisture level content. In areas with high humidity, apply when surface temperature is 60°F or higher. Use adequate ventilation during application. When applying with a sprayer, wear a NIOSH approved respirator with any R, P, N or HE filter. For interior use only.

CAUTION!
KEEP OUT OF REACH OF CHILDREN.

- Do not take internally. Close container after each use.
- Keep from freezing.
- 24 hour Emergency "CHEM-TEL" - 1-800-255-3924

Calculated VOC: 60 g/l

WARNING: Cancer and Reproductive Harm - www.P65Warnings.ca.gov



6 11131 94971 9

FIBERLOCK RECON SMOKE ODOR SEALER WHITE 3090
WARNING | ATTENTION



- H332 - Harmful if inhaled.
- H332 - Nocif par inhalation.
- H319 - Causes serious eye irritation.
- H319 - Provoque une sévère irritation des yeux.
- H317 - May cause an allergic skin reaction.
- H317 - Peut provoquer une allergie cutanée.
- H351 - Suspected of causing cancer.
- H351 - Susceptible de provoquer le cancer.

Obtain special instructions before use.; Use only outdoors or in a well-ventilated area.; Wear protective gloves/protective clothing/eye protection/face protection.; Use personal protective equipment as required.; Avoid breathing mist/vapours /spray.; Contaminated work clothing should not be allowed out of the workplace.; See SDS for full list of P phrases

Se procurer les instructions avant utilisation. Utiliser seulement en plein air ou dans un endroit bien ventilé. Porter des gants de protection/des vêtements de protection/un équipement de protection des yeux/du visage. Utiliser l'équipement de protection individuel requis. Éviter de respirer les brouillards/vapeurs /aérosols. Les vêtements de travail contaminés ne devraient pas sortir du lieu de travail. Voir SDS pour la liste complète des phrases P

IF exposed or concerned: Get medical advice/attention.; Specific treatment (see advice on this label).; Wash contaminated clothing before reuse.; IF ON SKIN: Wash with plenty of soap and water.; IF IN EYES: Rinse cautiously with water for several minutes. Remove contact lenses, if present and easy to do. Continue rinsing.; Call a POISON CENTER or doctor/physician if you feel unwell.; See SDS for full list of P phrases

EN CAS d'exposition prouvée ou suspectée: Consulter un médecin. Traitement spécifique (voir les conseils sur cette étiquette). Laver les vêtements contaminés avant réutilisation. EN CAS DE CONTACT AVEC LA PEAU: laver abondamment à l'eau et au savon. EN CAS DE CONTACT AVEC LES YEUX: rincer avec précaution à l'eau pendant plusieurs minutes. Enlever les lentilles de contact si la victime en porte et si elles peuvent être facilement enlevées. Continuer à rincer. Appeler un CENTRE ANTIPOISON ou un médecin en cas de malaise. Voir SDS pour la liste complète des phrases P

Canadian Contact Info:
4050-B Sladeview Crescent Suite 200
Mississauga, ON L5L 5Y5 Canada



150 Dascomb Rd.
Andover, MA 01810
(800) 342-3755
www.fiberlock.com
Rev. 10.17.18